

Dealing with climate change impacts is a learning process



Tell me your local experience, let us develop ideas jointly and turn the challenges into opportunities!

BIRGIT GEORGI 
Strong cities in a changing climate

www.birgitgeorgi.eu

How can we finance adaptation measures?

Think before starting any action!

What is the actual problem and what the underlying causes?



Which adaptation options are available?

and

Think twice: Which solutions will work best? Then chose!



Define what you need in terms of

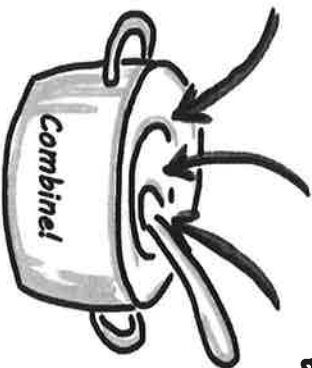
- money
- people
- knowledge



Options to implement - make your own blending!

- Adapt building and other regulations
- Crowdfunding
- Create own budget line
- Create specific tax or fees

- Mainstream into other related work programmes



- Enable citizens and business to take own action
- Grants from regional, national governments, EU, private foundations and other
- Loans from development banks
- Green bonds



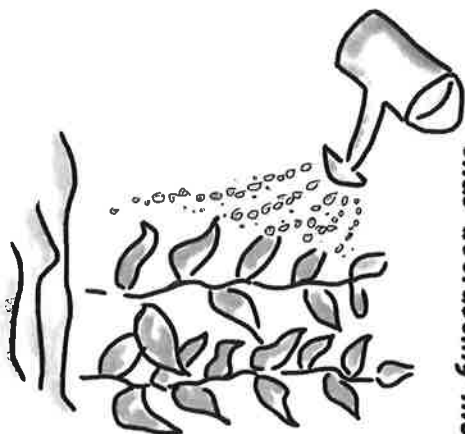
Too little money available?

- Start with baby steps; show first small results
- Get buy in from politicians; Find allies



- Get inspiration from others on how they managed to act

- Use it as seed money or to show first results or to provide incentives, thus attracting more money



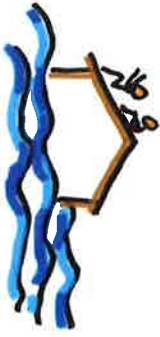
Where there is a will, there is a way!



Why should I care about climate impacts?

Climate change is happening!

- more heat waves
- more and higher floods
- higher sea level
- cloudbursts and storms
- or more droughts



- your's and other people's life and health are threatened
- houses and infrastructure are at risk
- transport, energy, water and food supply is at risk



Have you already experienced extreme events in the past?

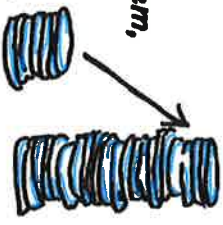
Which areas were flooded?

Have people suffered from heat or flooding?

Was power broken?...

The longer you neglect the problem, costs to adapt will rise!

You might lock in into a situation which no longer works in the future and which you cannot change!



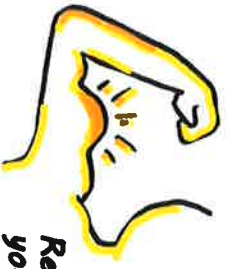
Are you aware of climate projections for your region? What do they tell?

and/or



Have you built the city at vulnerable places? Or is it badly designed? along a river? on mountain slopes? in dry areas?

Reduce suffering and costs overall by considering climate change impacts now!



Resilience makes you strong

Adaptation offers great opportunities to transform to the better



So ...

- Could you be affected?
- What can you gain from adapting?



Let's find out!